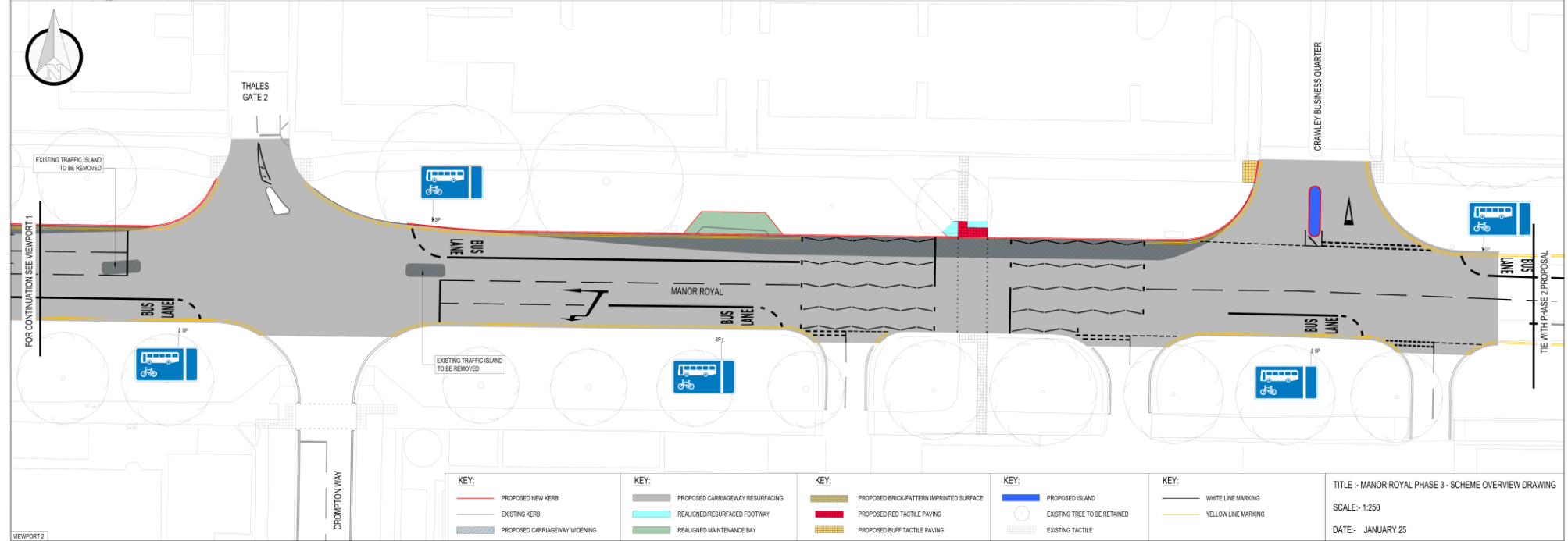
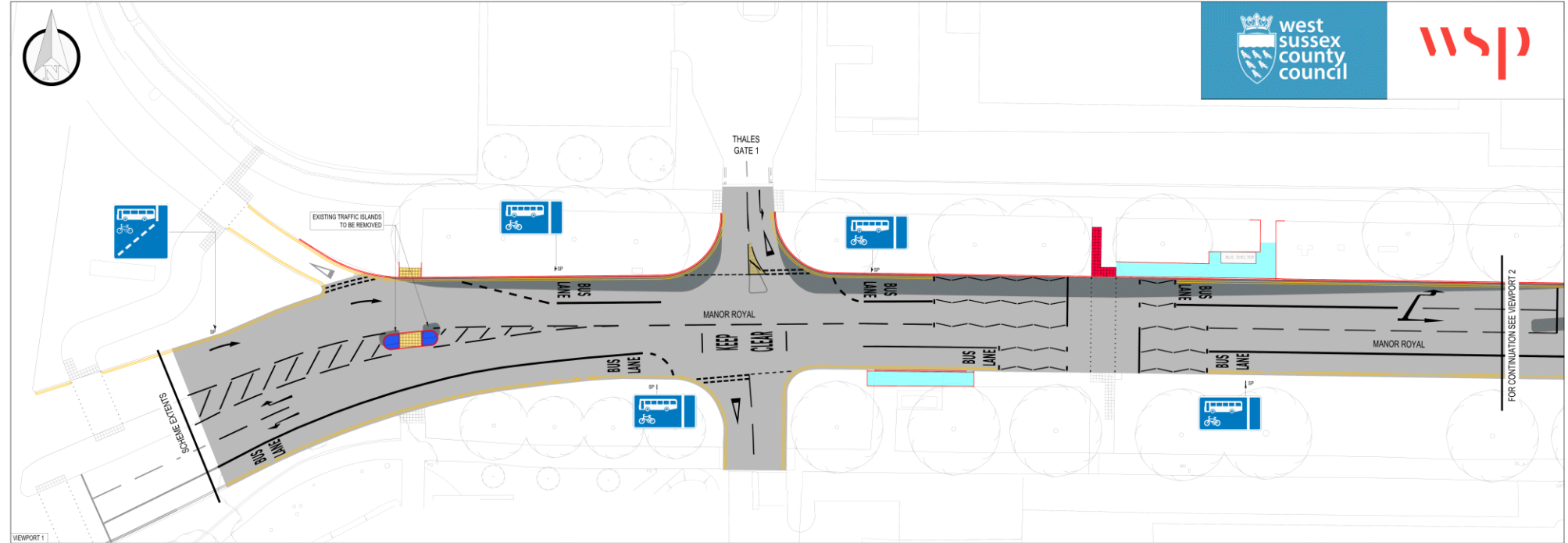


KEY:
PHASE 3 SCHEME EXTENTS

TITLE: MANOR ROYAL PHASE 3 - OVERVIEW PLAN
SCALE: NTS
DATE: JANUARY 25

Maurice Wood



KEY:

	PROPOSED NEW KERB
	EXISTING KERB
	PROPOSED CARRIAGEWAY WIDENING

KEY:

	PROPOSED CARRIAGEWAY RESURFACING
	REALIGNED/RESURFACED FOOTWAY
	REALIGNED MAINTENANCE BAY

KEY:

	PROPOSED BRICK-PATTERN IMPRINTED SURFACE
	PROPOSED RED TACTILE PAVING
	PROPOSED BUFF TACTILE PAVING

KEY:

	PROPOSED ISLAND
	EXISTING TREE TO BE RETAINED
	EXISTING TACTILE

KEY:

	WHITE LINE MARKING
	YELLOW LINE MARKING

TITLE - MANOR ROYAL PHASE 3 - SCHEME OVERVIEW DRAWING
 SCALE - 1:250
 DATE - JANUARY 25